



ANNUAL REPORT

2014-2015



TABLE OF CONTENTS

A Message from Dave & Perry	3
Financial Report.....	4
IMPACT: Neighborhoods & Local Communities.....	6
IMPACT: Municipalities.....	10
IMPACT Investing: 5 Key Areas	12
IMPACT: Small Business	14
IMPACT: Quality of Place	16
IMPACT: Education & Youth.....	22
Board & Staff Members.....	23

Grantee: Waterford Community Fair Association **Grant:** \$3,600
Project: Expand service to its 6,300 entrants

A Message from *Dave & Perry*



Impact investing is not a new concept. The Rockefeller, George Gund, and F.B. Heron foundations have been investing funds to drive social, cultural, and environmental change and maximize financial returns since the 1990s. Through impact investing, these groups have been able to realize larger gains toward their mission. This movement has recently caught fire and is now being adopted by foundations, brokers, philanthropists, and thought leaders around the world.

In 2014, the ECGRA board of directors adopted an Impact Investing Policy and began rethinking how it put gaming funds to work in Erie County. At a time when financial returns are generally most highly regarded, we're making targeted investments to change the life trajectory of residents in local communities. In Corry, we're piloting a neighborhood renewal initiative to elevate blighted neighborhoods. Across the county, we piloted a summer jobs program for disconnected youth. In our cities and boroughs, we're fostering small business growth and main street renewal. And throughout our county, we're igniting innovation and entrepreneurship and empowering nonprofits.

In the past 12 months, we've learned three very important lessons: productive collaborations between residents, local government, and business can vastly improve communities; relatively small, focused amounts of funding can positively shape the lives of Erie County residents; and looking beyond short-term gains and focusing on sustainable, systemic change are key to transforming Erie County.

We look forward to reporting short- and long-term outcomes as we continue to make impact investments in our community.

In service,

A handwritten signature in blue ink, appearing to read "David S. Sample".

David S. Sample, Chairman

A handwritten signature in blue ink, appearing to read "Perry N. Wood".

Perry N. Wood, Executive Director

FINANCIALreport

ASSETS

Checking Account	\$27,408.89
Savings Account	\$13,168,436.17
Accounts Receivable	\$1,350,000.00
Prepaid Expenses	\$7,610.00
TOTAL ASSETS	\$14,553,455.06

EQUITY

Beginning Balance	\$13,954,151.01
Net Income	\$599,304.05
Grants Issued	\$4,729,588.02
Community Assets	(\$172,542.00)
Corry Neighborhood Renewal Pilot	(\$20,000.00)
Human Services	(\$69,208.00)
Lead Assets	(\$970,217.59)
Lead Assets Endowment	(\$1,373,646.00)
Local Government Development	(\$1,383,095.43)
Mission Main Street	(\$77,530.00)
Multi-Municipal Collaboration	(\$242,987.00)
Small Business Financing	(\$150,000.00)
Special Events	(\$160,362.00)
Summer Jobs & More Pilot	(\$110,000.00)
TOTAL EQUITY	\$14,553,455.06



IMPACT
NEIGHBORHOODS &
LOCAL COMMUNITIES



IMPACT
MUNICIPALITIES



IMPACT
SMALL
BUSINESS



IMPACT
QUALITY
OF PLACE

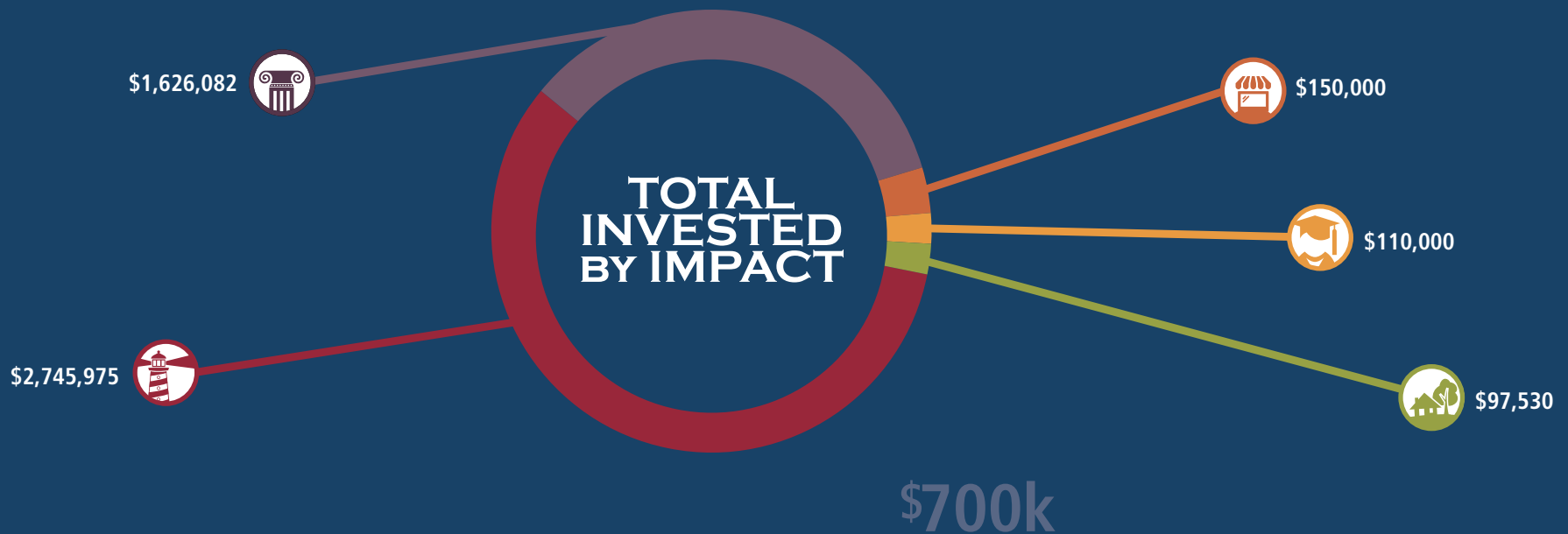


IMPACT
EDUCATION
& YOUTH

Erie County Council establishes
ECGRA as an economic
development financing authority

\$15M





2010

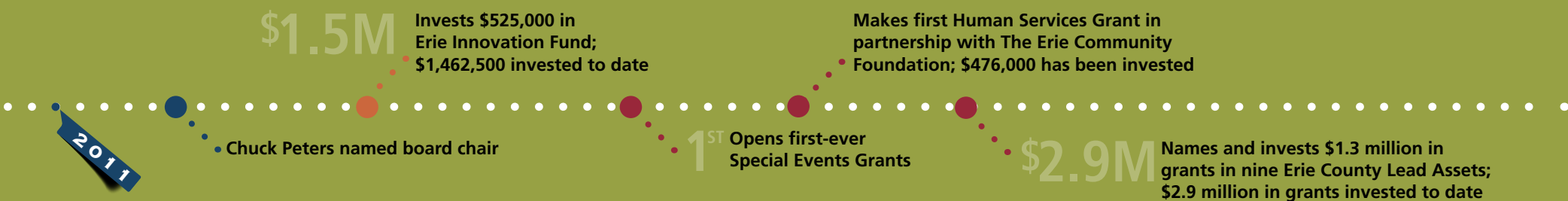
Receives President's Award from County Commissioners Association of Pennsylvania

2011

Creates Erie Innovation Fund in collaboration with Ben Franklin Technology Partners and commits \$700,000 to catalyze tech start-ups and manufacturers; eight small businesses fortified to date

“Successful revitalization
creates a neighborhood whose
conditions help enable all
of the residents to succeed
economically and socially.”

Sean Zielenbach, author of *The Art of Revitalization:
Improving Conditions in Distressed Inner-City Neighborhoods*



IMPACT NEIGHBORHOODS & LOCAL COMMUNITIES

2014 PILOT: Over the past two decades, the city of Corry has experienced the dual decline of its housing stock and its tax base. Closed businesses and lost jobs have resulted in increased poverty, declining population, and growing vacancy and blight. The median household income of Corry residents is \$30,677 compared to Pennsylvania residents' median HHI of \$52,267. Approximately 26% of the Corry population lives below the poverty level*—twice the Pennsylvania average. Of the 2,808 housing units in Corry, more than 11% are distressed or vacant*. Blight deters new talent and businesses from moving to Corry; declining property values provide little funding to the school district and city in the form of taxes.

In April, ECGRA and The Corry Community Foundation invested \$40,000 to launch the Corry Neighborhood Renewal pilot program and fuel a powerful partnership in which the Bayfront East Side Taskforce serves as exemplar to the Corry Neighborhood Initiative (CNI).

In its first six months, the pilot reported impressive outcomes: CNI demolished two blighted properties, formed a citizens action group, and kicked off Corry Cares, a campaign to raise funds for neighborhood renewal. In December, ECGRA joined forces with the Corry Industrial Benefit Association to create a \$100,000 revolving loan fund to help qualifying Corry homeowners make energy- and money-saving home improvements.

*Figures come from the American Communities Surveys 5-year estimates for 2012 and door-to-door surveys by the Corry Neighborhood Initiative.



WATCH IN 2015

Corry Neighborhood Renewal officials will continue their work with more than 40 owners in Corry's first ward to bring properties into compliance with code standards or plan demolition.

Using ECGRA funds, Erie Zoo presents Wild Wednesdays

Erie Art Museum uses ECGRA funds to offer free admission and family-friendly activities at Second Sundays

\$10M Exceeds \$10 million invested in Erie County

\$740k Invests \$94,000 in Erie County Special Events; \$737,000 invested to date

Begins funding Erie County's heritage and ethnic festivals through Special Events Grants; to date, ECGRA has funded German, Irish, Italian, Polish, Russian, and Scottish festivals



Main streets are at the heart of many of our municipalities and sound the pulse of our community. ECGRA's Mission Main Street Grants, launched in 2013, revitalize Erie County main corridors—home to small businesses, special events, historic structures, and central parks—and ultimately drive job creation, boost population, and promote tourism. This year, ECGRA invested \$77,530 to renew commercial corridors.

GRANTEES	GRANTS	PROJECTS
Corry Community Development Corporation	\$9,850	Install educational sidewalk panels, outdoor benches, and planters; expand décor to drive shoppers to “A Very Merry Corry Christmas,” the Corry Area Chamber of Commerce’s small business initiative; produce a marketing video
Downtown North East Inc.	\$15,000	Improve facades on 10 downtown businesses
Erie Downtown Partnership Inc.	\$15,000	In collaboration with ECGRA and the Pennsylvania Department of Community and Economic Development, improve facades on 15 downtown businesses
Fort LeBoeuf Historical Society	\$3,180	Install iron hand rails and gutters, repair the roof, and purchase lawn mowers for grounds maintenance at the historic Eagle Hotel in Waterford
McKean Borough	\$12,500	Replace 630 feet of dilapidated walking and storefront sidewalk along Main Street
Union City Community House Association	\$15,000	Construct a recreational pavilion and rehab a vacant downtown lot; install signage, planters, flowers, and trees for Community Days, Union City in Bloom, and “Buy Local” campaign
Waterford Borough	\$7,000	Landscape and hardscape around the community gazebo built in Municipal Park (built with a 2012-13 MMS grant)

\$90k Launches UChoose Grants; \$90,000 total invested in nine projects chosen by community voting

2011

1ST Opens first-ever Community Assets Grants

Erie County Historical Society uses ECGRA funds to host NASA Astronaut Colonel Michael Fincke



Grantee: Downtown North East Inc. **Grant:** \$15,000
Project: Improve facades on 10 downtown businesses
Photo by: Mark Fainstein

\$630k Invests \$151,000 in Erie County Community Assets;
 \$630,000 has been invested

1ST Enterprise Development Fund uses
 ECGRA Small Business Financing funds
 to make region's first microloan

Begins funding Erie County's fairs through Community Assets Grants;
 to date, ECGRA has funded the Albion Area Fair, Erie County Fair at
 Wattsburg, North East Community Fair, and Waterford Community Fair

IMPACT MUNICIPALITIES

Contiguous Municipalities

From public safety to infrastructure to health and human services, these six municipalities contiguous with Presque Isle Downs and Casino received \$1,383,095 in ECGRA funds to use for the betterment of Erie County residents:

Erie County
Greene Township
McKean Township
Millcreek Township
Summit Township
Waterford Township

“Cities are defined by the quality of the ideas they generate, the innovations they spur, and the opportunities they create for people living within and outside the city limits.”

Dr. Bruce Katz, author of *The Metropolitan Revolution: How Cities and Metros Are Fixing Our Broken Politics and Fragile Economy*



\$500k

Summit Township uses \$500,000 of ECGRA funds in a loan agreement to retain Lord Corporation jobs

2011

Sisters of Saint Joseph Neighborhood Network plan 18th Street mural, the first of several ECGRA-funded murals now beautifying countywide corridors

\$2.4M

Grants \$875,000 to the Enterprise Development Fund to invest in local small businesses; to date, ECGRA has invested \$2.375 million in grant and revolving loan funds to EDF

Multi-Municipal Collaboration

ECGRA invests in local government innovation through its Multi-Municipal Collaboration Grants. The first initiative of its kind, *Keystone Edge* named it “Erie County’s pioneering government cooperation fund” when MMC Grants launched in 2012. In 2015, ECGRA invested \$242,987 in five collaborative municipal projects representing 22 municipalities, authorities, nonprofits, and intergovernmental agencies.

GRANTEES	COLLABORATORS	GRANTS	PROJECTS
Erie Area Council of Governments	City of Erie, Erie County, Franklin Township, Girard Borough, Harborcreek Township, Lawrence Park Township, Millcreek Township, Summit Township, Wesleyville Borough	\$88,000	Create county and municipal websites, build information-sharing technologies, advance electronic forms and document management systems
Erie County Redevelopment Authority	City of Corry, Union City Borough	\$25,600	Develop a process to convert street lights to energy- and cost-saving LED
Harborcreek Township	Brookside Fire Company, Fairfield Hose Company, Harborcreek Fire Department, Lawrence Park Township	\$23,200	Purchase an emergency response vehicle to provide off-hours first responder and emergency medical technician services
Jefferson Educational Society	City of Corry, Cranesville Borough, Harborcreek Township, Millcreek Township	\$100,000	Develop emerging leaders and build a cooperative civic culture through the newly formed Jefferson Alliance for Community Progress
Platea Borough	Cranesville Borough, Elk Creek Township, Franklin Township, Girard Borough, Girard Township, Springfield Township	\$6,187	Keep neighborhoods clean and safe and promote recycling via the annual West Erie County Recycling/Clean-up Day Program

• Invests \$149,000 in Erie County Special Events

• Crime Victim Center uses an ECGRA Human Services Grant to expand services to rural Erie County

• Invests \$350,000 in the Erie Innovation Fund

• Funds used to present the first-ever Best Summer Night concert on Presque Isle State Park beaches

2012

Returns aren't always measured in dollars.

A growing movement spearheaded by the Rockefeller, George Gund, and F.B. Heron foundations, impact investing takes into account the social, cultural, and environmental effects of investments, in addition to the financial return. ECGRA has been measuring returns in both dollars and impact since 2011 and in 2014, ECGRA formally adopted an Impact Investing Policy to effect change in five specific areas.



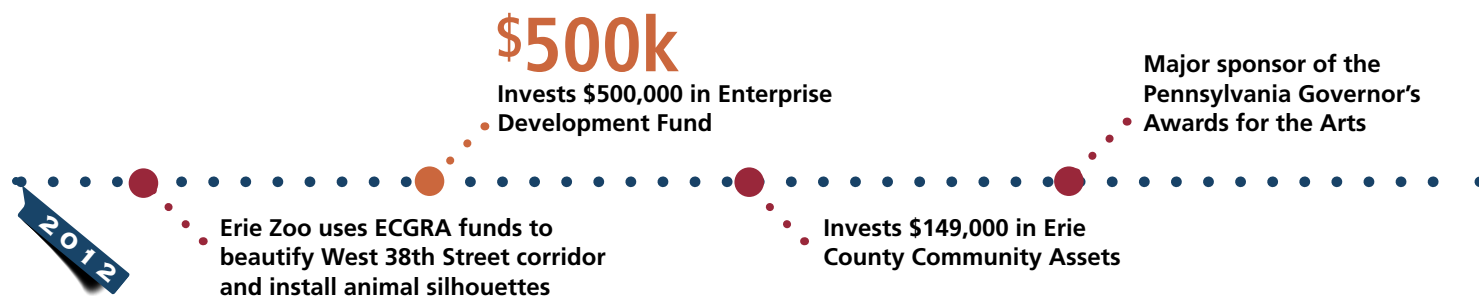
IMPACT SMALL BUSINESS

To catalyze our region's private sector and develop Erie's entrepreneurial ecosystem by spurring small business development, building collaborations for business acceleration, and offering a broader spectrum of financing products for starting, growing, and reinventing small business. Current initiatives include Ignite Erie™ and Mission-related Investments for Small Business Growth.



IMPACT EDUCATION & YOUTH

To educate Erie's young adult workforce, strengthen schools and employers, and abate poverty. Current initiatives include the School District Foundation Endowment Challenge and the Summer Jobs and More pilot.





IMPACT QUALITY OF PLACE

To promote well-being, foster civic pride, drive tourism, and attract, retain, and mobilize creative talent and innovative businesses through cultural, heritage, service, and recreational organizations and projects. Currently, grant and endowment funds are at work for Lead Assets, Community Assets, Special Events, and Human Services.



IMPACT NEIGHBORHOODS & LOCAL COMMUNITIES

To reinvigorate neighborhoods and main corridors, boost buy-local efforts, and combat blight. Current projects include Mission Main Street Grants and the Corry Neighborhood Renewal pilot.

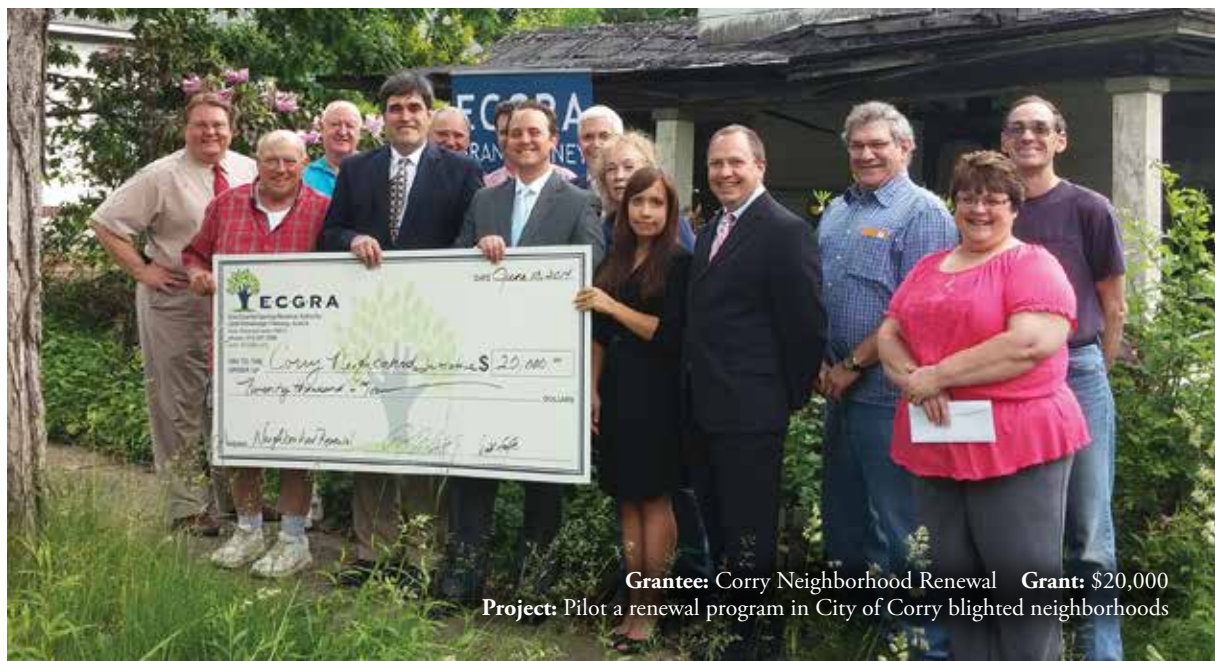


IMPACT MUNICIPALITIES

To foster progress and functional cooperation among Erie County's 38 municipal governments. Current grant programs include Local Government Development and Multi-Municipal Collaboration.

JMC Ice Arena scoreboard
restored using ECGRA funds

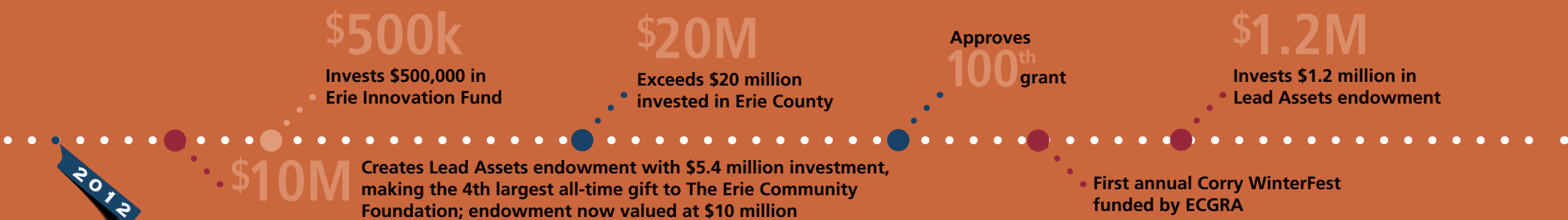
ECGRA funds used to renovate JC Martin Golf Course, the city of Erie's sole golf course used often by nonprofits to train kids in golf and in life skills



Grantee: Corry Neighborhood Renewal **Grant:** \$20,000
Project: Pilot a renewal program in City of Corry blighted neighborhoods

“Economic activity in and around inner cities will take root if it enjoys a competitive advantage and occupies a niche that is hard to replicate elsewhere.”

Dr. Michael Porter, economist, researcher, author, advisor, speaker, and Harvard Business School professor





IMPACT SMALL BUSINESS

Ignite Erie kicked off in November 2013 when ECGRA and 26 leading agencies and businesses brought together more than 350 entrepreneurs, educators, policy makers, subject-matter experts, and elected officials to discuss the future of inner-city investment and innovation-based economic development.

In late 2014, ECGRA rolled out phase two by committing \$3 million over three years to small business development. The goals? To create jobs, renew inner-city neighborhoods, inspire partnerships that serve entrepreneurs, leverage private investments, and ignite Erie's entrepreneurial spirit.

Early this year, ECGRA made its first Ignite Erie investments:

\$150,000 in Inner-city Small Business Development

Economist Michael Porter believes that America's distressed cities are the greatest challenge the nation faces. ECGRA awarded \$50,000 to the Erie Education, Employment, and Entrepreneurship Center, a unifying effort of Community Capital Development Corporation and Urban Erie Community Development Corporation, and \$100,000 to Bridgeway Capital Inc. for the sole purpose of working collaboratively with banks, developers, and small business owners to ignite commercial activities in Erie's inner city.

WATCH IN 2015

Across the country, universities are collaborating with each other, startup entrepreneurs, small business, manufacturing, labor, healthcare, and local government to build an atmosphere conducive to innovation. ECGRA will support entrepreneurs from stage-to-stage of new product and service development through a \$1.5 million business acceleration collaborative with Penn State Erie, The Behrend College, and Mercyhurst University.

To spur job creation and business development and fill gaps in the spectrum of financing products available for starting, growing, and reinventing small business, ECGRA will make its first mission-related investments—investments that generate financial returns alongside social or environmental impact.

• Receives Investor Award from Enterprise Development Fund

Funds
100th
organization

2013

• Invests \$155,000 in Erie County Special Events

1ST Opens first-ever ECGRA Mission Main Street Grants

• Approves
250th
grant



Grantee: Lake Erie Ballet **Grant:** \$2,700
Project: 56th Nutcracker performance

IMPACT

QUALITY of PLACE

ECGRA's Regional Assets represent Erie County's key cultural, heritage, and recreational organizations and events. Grantees improve residents' sense of community and quality of life, inspire innovation, and drive millions of tourists to our region. ECGRA Human Services Grants, made in collaboration with The Erie Community Foundation, mobilize nonprofits to serve and empower our in-need neighbors. These grantees work together to promote our health, happiness, and well-being, and improve Erie's overall quality of place.

Union City officials use a Mission Main Street Grant to renew facades damaged by the May 2013 tornado

ECGRA Lead Asset Erie Playhouse performs "Spirit of Erie" as part of the Perry 200 Commemoration

2013

\$160k

Deploys \$79,000 in Mission Main Street Grants for revitalization of seven commercial corridors countywide; \$160,000 invested to date

COMMUNITY ASSETS

\$172,542 in 22 Investments

ASBURY WOODS PARTNERSHIP INC.

To design three new hands-on interactive ecosystem attractions
\$6,354

BOY SCOUTS OF AMERICA - FRENCH CREEK COUNCIL

For technology that helps facilitate Learning for Life, summer camp, and youth and adult scouting programs
\$9,750

DOWNTOWN EDINBORO ART & MUSIC FESTIVAL

For operating the 11th annual folk art and music festival
\$8,512

EDINBORO AREA HISTORICAL SOCIETY

To fund the 175th Founder's Day celebration
\$1,679

EDINBORO HIGHLAND GAMES

For the Scottish Festival, including multiple competitions, music, dance, food, and family gatherings
\$6,300

EDINBORO UNIVERSITY FOUNDATION

To provide enhanced media coverage to southern Erie County via "Boro 24/7: A Campus & Community Partnership"
\$9,900

ERIE COUNTY FAIR AT WATTSBURG

To purchase 300 chairs and 10 banquet tables
\$3,415

ERIE COUNTY VIETNAM VETERANS MEMORIAL

To complete the memorial by adding a prayer stone
\$3,198

FORT LEBOEUF HISTORICAL SOCIETY

For critical improvements to the Historic Eagle Hotel, Judson House, and Fort LeBoeuf Museum
\$9,600

In collaboration with the Jefferson Educational Society, presents Perry 200 Commemoration fireworks in the city of Erie, Girard, North East, and Waterford

GANNON UNIVERSITY - ERIE CHAMBER ORCHESTRA

To perform free concerts featuring world-renowned soloists at inner-city schools and downtown venues
\$11,550

HARBOR CREEK LITTLE LEAGUE

To renovate three baseball and two softball fields
\$10,950

LAKE ERIE ARBORETUM AT FRONTIER

To purchase signage and brochures, prepare green-roof lesson plans, and maintain grounds
\$6,200

LAKE SHORE RAILWAY HISTORICAL SOCIETY

To restore two historical GE Transportation-made locomotives
\$9,000

LEBOEUF LITTLE LEAGUE

To rehab multipurpose building and Challenger Field and to purchase new baseball and softball equipment
\$10,950

MEAD PARK ASSOCIATION

To prepare grounds for and install new playground equipment
\$11,850

NORTH EAST COMMUNITY FAIR ASSOCIATION

For door replacement and roof repairs on an event-critical storage unit
\$1,173

PERFORMING ARTISTS COLLECTIVE ALLIANCE

For critical upgrades to the theater performance space
\$8,487

PRESQUE ISLE PARTNERSHIP

To replace deteriorated wooden tables with recycled aluminum tables and to install bike racks throughout the park
\$11,550

SNOOPS NEIGHBORHOOD WATCH ASSOCIATION

To create a gateway mural on the high-visibility railroad overpass located at E. 15th & Ash streets
\$10,640

URBAN ERIE COMMUNITY DEVELOPMENT CORPORATION

For girls ages 6-18 from West Africa to perform "My Mama Was a Refugee," an original dance and music production
\$3,184

WATTSBURG CEMETERY ASSOCIATION

To improve safety and aesthetics by replacing deteriorated fencing
\$8,400

YOUNG ARTISTS DEBUT ORCHESTRA

For its 10th season of performing and matching students ages 6-21 with professional musician mentors
\$9,900

SPECIAL EVENTS

\$160,362 in 193 Events

ALBION AREA FAIR INC.

To maintain high-quality fair exhibits by installing sliding steel doors and cementing floors in the animal barns
\$4,424

BARBER NATIONAL INSTITUTE

To raise awareness for individuals with disabilities via BNI's Art Show & Sale, Beast on the Bay, and Christmas Ball
\$14,116

BOROUGH OF WESLEYVILLE

For Wesleyville Days, an annual event celebrating the past, present, and future of the borough
\$599

BOY SCOUTS OF AMERICA - FRENCH CREEK COUNCIL

To provide youth ages 6-20 opportunities to gain knowledge of local heritage and learn a variety of skills while being mentored by caring adults
\$650

CAFÉ

For CelebrateErie, a four-day, open-air street festival in the heart of downtown Erie
\$15,750

CORRY COMMUNITY DEVELOPMENT CORPORATION

To promote outdoor family activities at WinterFest and to operate CorryFest, the largest free celebration in southern Erie County
\$2,068

DAN RICE DAYS

For the 44th annual Dan Rice Days Celebration, Girard's premier family-friendly event
\$306

DOWNTOWN EDINBORO ART & MUSIC FESTIVAL

To showcase grassroots art and music in the unique spirit of Appalachian culture and tradition
\$2,246

EDINBORO HIGHLAND GAMES

To further Scottish heritage, competitive arts, and heavy athletics
\$2,493

\$565k

Invests \$565,000 in Lead Assets endowment

Invests \$157,000 in Erie County Community Assets

\$1M

Invests \$1 million in revolving loan funds in Enterprise Development Fund

ECGRA funds used to erect the Purple Heart Memorial of NWPA

ECGRA burgee flies on the Flagship Niagara at Erie's Tall Ships Festival

Goodell Gardens uses ECGRA funds to replace roof on its historic bank barn

“Finding a place that makes us happy has a powerful effect on our ‘activation.’ Such places encourage people to do more than they otherwise would, such as engage in more creative activities, invent new things, or start new companies—all things that are both personally fulfilling and economically productive.”

Economic geographer and theorist Dr. Richard Florida,
author of *The Rise of the Creative Class*



EDINBORO UNIVERSITY FOUNDATION

For the three-day Boropalooza Homecoming festival
\$4,455

ERIE COUNTY FAIR AT WATTSBURG

To demonstrate the past, present, and future of local agriculture at annual Erie County Fair
\$10,257

ERIE DANCE CONSERVATORY COMPANY

To feature the talents of local dancers and the next generation of artists in "How the Grinch Stole Christmas"
\$860

ERIE DOWNTOWN PARTNERSHIP

To promote city attractions via Bike Nights, Block Parties, and Downtown d'Lights
\$2,250

ERIE HOMES FOR CHILDREN & ADULTS INC.

To increase participants' quality of life and promote ability over disability at EHCA's Partners in Dance, THE Spring Event, and Victory Ride
\$2,480

ERIE REGIONAL CHAMBER & GROWTH PARTNERSHIP

To attract tourists and promote local businesses and brewers at the Beer on the Bay Craft Brew Festival
\$2,250

ERIE-WESTERN PORT AUTHORITY

For the free 8 Great Tuesdays Summer Concert Series at Liberty Park
\$6,290

FORT LEBOEUF HISTORICAL SOCIETY

To highlight historical encampments, re-enactors, period antiques, and handmade crafts at the annual Waterford Days Celebration
\$900

GANNON UNIVERSITY

To attract and retain students and foster relationships with alumni at the weekend homecoming event
\$1,350

GREATER CALVARY FULL GOSPEL BAPTIST CHURCH

To educate youths about risks of casual sex, drug and tobacco use, and violence at abstinence conference and operate the Fun Day summer festival
\$1,481

HARBORCREEK TOWNSHIP

To bring families and community members together at two free family-oriented concerts and fireworks displays
\$1,440

HIGHMARK CARING PLACE

For "Whispers of Light: A Story of Hope," a dance performance depicting the grief of children and families who have lost a loved one
\$2,250

HOLY TRINITY ROMAN CATHOLIC CHURCH

To preserve the local Polish heritage and share its culture at the Zabawa Festival
\$4,860

JEFFERSON EDUCATIONAL SOCIETY

To expand intellectual horizons via presentations by nationally known experts at Global Summit V
\$13,950

LAKE ERIE ARBORETUM AT FRONTIER

To encourage the public to enjoy the beauty of Frontier Park via Arbor Day, ArborEAT'em, Arts in the Arboretum, FROLF (frisbee/golf), LEAF Festival, Movies in the Park, and Winterfest
\$1,755

LAKE ERIE BALLET

For the 56th production of the Nutcracker
\$2,700

LAKE ERIE FANFARE INC.

For the 31st annual Drum Corps International competition
\$2,214

LAKE ERIE FANFARE INC.

To promote heritage at the 18th annual German Heritage Festival
\$2,205

LAWRENCE PARK TOWNSHIP

For the two-day July 4th family-friendly parade, celebration, and fireworks display
\$801

THE NONPROFIT PARTNERSHIP

To educate and empower regional nonprofit leaders at the 14th Annual NWPA Nonprofit Day
\$2,814

NORTH EAST COMMUNITY FAIR ASSOCIATION

To showcase local fruits, flowers, crafts, baked and canned goods at the 88th North East Community Fair
\$585

PRESQUE ISLE PARTNERSHIP

To attract and entertain visitors and residents at the Best Summer Night featuring Steely Dan, UPMC Sunset Music Series, Discover Presque Isle, and Three Mile Isle
\$31,932

\$12.5M

Small Business Financing investments reach more than \$12.5 million in leveraged private cash and in-kind investments

- Dave Sample named board chair

2014

- Invests \$160,000 in Erie County Special Events

- Launches Corry Neighborhood Renewal pilot project in collaboration with The Corry Community Foundation, Corry Industrial Benefit Association, Corry Neighborhood Initiative, and Bayfront East Side Taskforce

RUSSIAN ORTHODOX CHURCH OF THE NATIVITY

To bring high-quality folk entertainment, food, and experience via the Russian Troika Festival
\$1,800

SAFENET

For the 40th Anniversary Gala, a fundraiser for the Abuse Prevention and Children's Program Endowment
\$4,500

SAINT BONIFACE PLAYERS

To produce the all-school, full-scale musical "Annie Get Your Gun" and the all-community play "Inspecting Carol"
\$981

SAINT PATRICK CHURCH

To promote and sustain Irish culture at the Erie Irish Festival
\$2,250

SISTERS OF ST. JOSEPH NEIGHBORHOOD NETWORK

To highlight the cultural heritage of regional Italian immigrants and establish the "Little Italy" neighborhood via the Italian Festival
\$3,600

UNION CITY PRIDE INC.

To celebrate Union City's historic background at the Gathering at French Creek family festival
\$900

WATERFORD COMMUNITY FAIR ASSOCIATION

To organize one of the county's largest fairs with more than 6,300 entrants, showcasing livestock, produce, and home economic wares
\$3,600

HUMAN SERVICES

*in collaboration with
The Erie Community Foundation*
\$69,208 in 7 special projects

ALL ABOUT CHARACTER INC.

To combat violence and increase high school graduation rates via "Character Be About It/ Troopers Teaching Students" character-education curriculum
\$10,000

EARLY CONNECTIONS

To increase the safety and security of the children and staff at the city center child-care facility by adding multiple wireless security devices
\$5,208

MOTHERS AGAINST TEEN VIOLENCE

To empower, motivate, and encourage youths to develop positive healthy lifestyles through the Leadership, Empowerment, Accountability, Diversity (L.E.A.D.) summer program
\$8,000

OPPORTUNITIES UNLIMITED

To purchase and renovate dry-cleaning equipment to provide job training and work experience to individuals with disabilities
\$15,000

SARAH REED CHILDREN'S CENTER

To improve safety of youth residents by installing security and video monitoring systems
\$5,000

THE UPPER ROOM

To renovate main facility used to shelter near-homeless and homeless adults
\$18,500

URBAN ERIE COMMUNITY DEVELOPMENT CORPORATION

To increase awareness of black history by expanding "Embracing the Past, While Celebrating the Future" to Erie School District teachers and students
\$7,500

Deploys \$78,000 in Mission Main Street Grants

Downtown North East Inc. begins reviving 12 facades using ECGRA Mission Main Street Grants

\$10M

Lead Assets endowment exceeds \$10 million and is recognized as The Erie Community Foundation's 2nd largest endowment

Joins forces with Erie County government and The Erie Community Foundation to pilot Summer Jobs and More for disconnected youth

ECGRA funds used to erect Vietnam Veterans Memorial

2014

Grantee: Lead Asset expERIENCE Children's Museum **Grant:** \$42,112
Project: To paint Tot Spot mural, design educational programming, and celebrate 20 years

LEAD ASSETS

\$2,343,864 in Grant and Endowment Funds

In 2011, ECGRA named and made its initial investments in the Erie County Lead Assets. In 2012, ECGRA committed to sustain those organizations in perpetuity and created the Erie County Lead Assets Endowment, held in trust at The Erie Community Foundation. This year, ECGRA invested \$970,218 in grant funds in the Lead Assets and grew the endowment to more than \$10 million with a \$1,373,646 investment.

- Using an ECGRA grant, Presque Isle Partnership completes restoration of the 1872 Presque Isle Lighthouse



To create and promote a master vision for arts and culture in the region and establish a centralized cultural website
\$95,516



To promote Erie's independent galleries and vibrant arts scene via Gallery Night and to foster an entrepreneurial ecosystem via InnovationErie: Design Competition
\$130,008



For in-school field trips about our region's history using "education chests" that include actual Erie artifacts and stories and foster a passion for local history
\$56,012



To perform at schools and community centers via Community Music Connections
\$121,283



To conceive and present theatrical mini-events that transform children's books into character-development lessons for at-risk children and their parents
\$122,496



For the new cat exhibit and for free entertainment and member-only perks available at Wild Wednesdays
\$277,395



To celebrate 20 years of play and learning and to create and present 12 educational components for toddlers and preschoolers using the new interactive woodland mural in the Tot Spot
\$42,112



For new traveling maritime curriculum designed for preschool through high school students that complement core history teaching and relieve traditional field trip costs
\$50,299



For artists-in-residence to present to children and adults at more than 20 in-community art and education venues
\$75,097

IMPACT

EDUCATION & YOUTH

To help change the trajectory of at-risk young lives and improve the region's economy, ECGRA collaborated in May 2014 with Erie County Council and The Erie Community Foundation to pilot Erie Summer Jobs and More. The results: 123 eligible participants ages 16-21 received paid on-the-job training from 32 countywide employers in a variety of professions.

ECGRA and its partners intend to expand Summer Jobs and More to serve 200 youths and grow the program to include more work and learning opportunities in science, technology, engineering, art+design, and math.

WATCH IN
2015

In early 2015, ECGRA launched the School District Foundation Endowment Challenge—a \$200,000 incentive to help Erie County's 13 public school districts grow their endowments. Through 2016, ECGRA will match funds raised by the foundations up to \$5 per student per district and provide free training to build organizational and fundraising capacity.

\$1.4M

Supports Erie County's rich rail history by partnering with GE Transportation to fund preservation efforts of Lake Shore Railway Historical Society and Museum

Invests \$1.4 million in Lead Assets endowment

Using ECGRA funds, exPERIENCE Children's Museum opens Tot Spot, featuring interactive curriculum centered around woodland creatures mural

2014

Partners with Corry Industrial Benefit Association to create energy-efficiency revolving loan fund to support Corry homeowners

Invests \$173,000 in Erie County Community Assets

Sponsors Brookings Institution's Bruce Katz to present at Jefferson Educational Society's Global Summit



BOARD & STAFF MEMBERS

Board of Directors:

Dale E. Barney, Production, General Electric Transportation
 Dr. Lynn K. Corder, Retired Superintendent,
 Northwestern School District
 Tony A. Logue, Attorney
 Michael J. Paris, Owner, Paris Homes
 Charles J. Peters, Managing Partner, Altair Real Estate Services
 David S. Sample, Owner, Corry Lumber Company Inc.
 David H. Yapple, Owner/Operator, Pine Avenue
 and Lawrence Park Dairy Queens
 Jay A. Breneman (ex-officio), Member, Erie County Council
 Gary N. Lee (ex-officio), Director of Administration, County of Erie
 Fiore Leone (ex-officio), Chair, Erie County Council

Special thanks to: Barbara H. Steele, Senior Accountant, GECAC, 2014 board member

ECGRA Staff

Perry N. Wood, Executive Director
 Diane K. Kuvshinikov, Executive Assistant

Many thanks to PR and Brand Manager Amanda P. Burlingham and Jenny Poff of Presque Isle Designs for helping us showcase the impact of ECGRA grant money at work in Erie County.

\$30M

Exceeds \$30 million
 invested in Erie County

Launches Phase 2 of Ignite
 Erie; commits \$3.9 million

2015

Launches School District Foundation
 Endowment Challenge

Invests \$179,000
 in Erie County
 Special Events

Deploys \$243,000
 in Multi-Municipal
 Collaboration Grants

Invests \$150,000
 in Inner-city Small
 Business Development

\$750k

Invests \$750,000 in
 Industry+University Business
 Acceleration Collaborative

